

Końcówki kablowe kątowe rurowe z otworem inspekcyjnym typu K90Ro

CECHY I KORZYŚCI



końcówka oczkowa Cu w wersji standard z pokryciem galwanicznym cyną i otworem inspekcyjnym oraz podejściem do zacisku pod kątem 90 stopni



opis przekroju przewodu i rozmiar zacisku na powierzchni płetwy

DANE MECHANICZNE

| | |
|----------|-----------------------|
| Materiał | Cu |
| Pokrycie | cynowane galwanicznie |

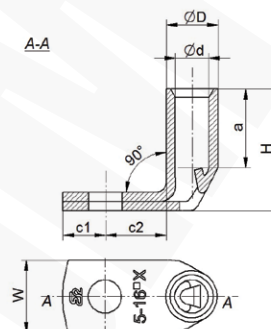
CERTYFIKATY I NORMY

| | |
|---------------|----------|
| Certyfikat UL | E475284 |
| Wykonanie | standard |

UWAGA!

- żyły sektorowe (sm) muszą zostać przeformowane "na okrągło";
- stosować narzędzia jak do końcówek K90R.

Certyfikat UL - aktualne informacje na stronie www.ergom.com



| Typ | Indeks Ergom | Przekrój rm/ sm [mm²] | d | D | a | c1 | c2 | W | H | Otwór pod śrubę | UL | Nr gniazda | Lz/s | Lz/w | W opakowaniu [szt.] | Waga [kg] |
|------------------------|-------------------|--------------------------|-----|------|----|------|------|------|------|--------------------|----|---------------|------|------|------------------------|--------------|
| K90Ro 6/5 (100 SZT.) | E11KM-01041100040 | 6 | 4,0 | 6,0 | 10 | 7,0 | 10,0 | 9,0 | 13,0 | M5 | - | 4 | 1 | 1 | 100 | 0,32 |
| K90Ro 6/6 (100 SZT.) | E11KM-01041100060 | | | | | 7,5 | 13,0 | 12,0 | | M6 | | | | | | 0,34 |
| K90Ro 6/8 (100 SZT.) | E11KM-01041100080 | | | | | 9,0 | 13,0 | 12,0 | | M8 | | | | | | 0,41 |
| K90Ro 10/5 (100 SZT.) | E11KM-01041100100 | 10 | 4,5 | 7,0 | 10 | 7,5 | 10,0 | 12,0 | 15,0 | M5 | - | 7 | 1 | 1 | 100 | 0,65 |
| K90Ro 10/6 (100 SZT.) | E11KM-01041100200 | | | | | 11,0 | 15,0 | 17,0 | | M6 | | | | | | 0,77 |
| K90Ro 10/8 (100 SZT.) | E11KM-01041100300 | | | | | 9,0 | 13,0 | 15,0 | | M8 | | | | | | 0,71 |
| K90Ro 10/10 (100 SZT.) | E11KM-01041100400 | | | | | 11,0 | 15,0 | 17,0 | | M10 | | | | | | 0,77 |
| K90Ro 10/12 (100 SZT.) | E11KM-01041100500 | 16 | 5,5 | 8,5 | 13 | 12,0 | 15,0 | 19,0 | 20,0 | M12 | √ | 8 | 1 | 2 | 100 | 0,77 |
| K90Ro 16/5 (100 SZT.) | E11KM-01041100600 | | | | | 7,0 | 10,0 | 12,0 | | M5 | | | | | | 1 |
| K90Ro 16/6 (100 SZT.) | E11KM-01041100700 | | | | | 7,5 | 10,0 | 12,0 | | M6 | | | | | | 1,1 |
| K90Ro 16/8 (100 SZT.) | E11KM-01041100800 | | | | | 9,0 | 13,0 | 15,0 | | M8 | | | | | | 1,15 |
| K90Ro 16/10 (100 SZT.) | E11KM-01041100900 | 25 | 7,0 | 10,0 | 15 | 11,0 | 15,0 | 17,0 | 23,5 | M10 | √ | 10 | 1 | 2 | 100 | 1,2 |
| K90Ro 16/12 (100 SZT.) | E11KM-01041101000 | | | | | 12,0 | 15,0 | 19,0 | | M12 | | | | | | 1,6 |
| K90Ro 25/5 (100 SZT.) | E11KM-01041101100 | | | | | 7,0 | 10,0 | 14,0 | | M5 | | | | | | 1,4 |
| K90Ro 25/6 (100 SZT.) | E11KM-01041101200 | | | | | 7,5 | 10,0 | 14,0 | | M6 | | | | | | 1,45 |
| K90Ro 25/8 (100 SZT.) | E11KM-01041101300 | 35 | 8,5 | 12,0 | 17 | 9,0 | 13,0 | 16,0 | 27,0 | M8 | √ | 12 | 1 | 2 | 100 | 1,5 |
| K90Ro 25/10 (100 SZT.) | E11KM-01041101400 | | | | | 11,0 | 15,0 | 18,0 | | M10 | | | | | | 1,6 |
| K90Ro 25/12 (100 SZT.) | E11KM-01041101500 | | | | | 12,0 | 15,0 | 19,0 | | M12 | | | | | | 1,55 |
| K90Ro 25/14 (100 SZT.) | E11KM-01041101600 | | | | | 14,0 | 18,0 | 19,0 | | M14 | | | | | | 1,6 |
| K90Ro 35/6 (100 SZT.) | E11KM-01041101700 | 35 | 8,5 | 12,0 | 17 | 7,5 | 10,0 | 18,0 | 27,0 | M6 | √ | 12 | 1 | 2 | 100 | 2,3 |
| K90Ro 35/8 (100 SZT.) | E11KM-01041101800 | | | | | 9,0 | 13,0 | 18,0 | | M8 | | | | | | 2,4 |
| K90Ro 35/10 (100 SZT.) | E11KM-01041101900 | | | | | 11,0 | 15,0 | 20,0 | | M10 | | | | | | 2,45 |
| K90Ro 35/12 (100 SZT.) | E11KM-01041102000 | | | | | 12,0 | 18,0 | 21,0 | | M12 | | | | | | 2,4 |
| K90Ro 35/14 (100 SZT.) | E11KM-01041102100 | 35 | 8,5 | 12,0 | 17 | 14,0 | 18,0 | 21,0 | 27,0 | M14 | √ | 12 | 1 | 2 | 100 | 2,45 |

| Typ | Indeks Ergom | Przekrój rm/ sm [mm²] | d | D | a | c1 | c2 | W | H | Otwór pod śrubę | UL | Nr gniazda | Lz/s | Lz/w | W opakowaniu [szt.] | Waga [kg] | | | | | | | | | | | |
|------------------------|-------------------|--------------------------|------|------|------|------|------|------|------|--------------------|------|---------------|------|------|------------------------|--------------|------|------|------|------|-----|---|----|---|---|----|------|
| K90Ro 50/6 (100 SZT.) | E11KM-01041102200 | 50 | 10,0 | 14,0 | 19 | 7,5 | 10,0 | 23,0 | 31,0 | M6 | √ | 14 | 1 | 2 | 100 | 3,25 | | | | | | | | | | | |
| K90Ro 50/8 (100 SZT.) | E11KM-01041102300 | | | | | 9,0 | 13,0 | | | M8 | | | | | | 3,4 | | | | | | | | | | | |
| K90Ro 50/10 (100 SZT.) | E11KM-01041102400 | | | | | 11,0 | 15,0 | | | M10 | | | | | | 3,5 | | | | | | | | | | | |
| K90Ro 50/12 (100 SZT.) | E11KM-01041102500 | | | | | 12,0 | 18,0 | | | M12 | | | | | | 3,7 | | | | | | | | | | | |
| K90Ro 50/14 (100 SZT.) | E11KM-01041102600 | | | | | 14,0 | 23,0 | | | M14 | | | | | | 3,7 | | | | | | | | | | | |
| K90Ro 50/16 (100 SZT.) | E11KM-01041102700 | | | | | 16,0 | 28,0 | | | M16 | | | | | | 3,7 | | | | | | | | | | | |
| K90Ro 70/6 (100 SZT.) | E11KM-01041102800 | 70 | 12,0 | 16,5 | 21 | 7,5 | 10,0 | 23,0 | 35,0 | M6 | √ | 16 | 1 | 2 | 100 | 4,7 | | | | | | | | | | | |
| K90Ro 70/8 (100 SZT.) | E11KM-01041102900 | | | | | 9,0 | 13,0 | | | M8 | | | | | | 4,85 | | | | | | | | | | | |
| K90Ro 70/10 (100 SZT.) | E11KM-01041103000 | | | | | 11,0 | 15,0 | | | M10 | | | | | | 5,1 | | | | | | | | | | | |
| K90Ro 70/12 (100 SZT.) | E11KM-01041103100 | | | | | 12,0 | 18,0 | | | M12 | | | | | | 5 | | | | | | | | | | | |
| K90Ro 70/14 (100 SZT.) | E11KM-01041103200 | | | | | 14,0 | 23,0 | | | M14 | | | | | | 5,2 | | | | | | | | | | | |
| K90Ro 70/16 (100 SZT.) | E11KM-01041103300 | | | | | 16,0 | 28,0 | | | M16 | | | | | | 5,3 | | | | | | | | | | | |
| K90Ro 95/8 (50 SZT.) | E11KM-01041103400 | 95 | 13,5 | 18,0 | 24 | 16,0 | 17,0 | 26,0 | 37,0 | M8 | √ | 17 | 1 | 2 | 50 | 3,12 | | | | | | | | | | | |
| K90Ro 95/10 (50 SZT.) | E11KM-01041103500 | | | | | 12,0 | 17,0 | | | M10 | | | | | | 3,1 | | | | | | | | | | | |
| K90Ro 95/12 (50 SZT.) | E11KM-01041103600 | | | | | 18,0 | 20,0 | | | M12 | | | | | | 3,6 | | | | | | | | | | | |
| K90Ro 95/14 (50 SZT.) | E11KM-01041103700 | | | | | 20,0 | 22,0 | | | M14 | | | | | | 3,6 | | | | | | | | | | | |
| K90Ro 95/16 (50 SZT.) | E11KM-01041103800 | | | | | 16,0 | 22,0 | | | M16 | | | | | | 3,3 | | | | | | | | | | | |
| K90Ro 95/20 (50 SZT.) | E11KM-01041103900 | | | | | 20,0 | 24,0 | | | M20 | | | | | | 3,3 | | | | | | | | | | | |
| K90Ro 120/8 (50 SZT.) | E11KM-01041103950 | 120 | 15,0 | 19,5 | 26 | 16,0 | 28,0 | 31,0 | 43,0 | M8 | √ | 19 | 1 | 2 | 50 | 3,8 | | | | | | | | | | | |
| K90Ro 120/10 (50 SZT.) | E11KM-01041104000 | | | | | 12,0 | 17,0 | | | M10 | | | | | | 3,7 | | | | | | | | | | | |
| K90Ro 120/12 (50 SZT.) | E11KM-01041104100 | | | | | 18,0 | 20,0 | | | M12 | | | | | | 3,7 | | | | | | | | | | | |
| K90Ro 120/16 (50 SZT.) | E11KM-01041104300 | | | | | 16,0 | 22,0 | | | M16 | | | | | | 4,3 | | | | | | | | | | | |
| K90Ro 120/20 (50 SZT.) | E11KM-01041104400 | | | | | 20,0 | 24,0 | | | M20 | | | | | | 4,4 | | | | | | | | | | | |
| K90Ro 150/10 (50 SZT.) | E11KM-01041104500 | | | | | 150 | 16,5 | | | 21,0 | | | | | | 30 | 12,0 | 17,0 | 31,0 | 41,0 | M10 | √ | 20 | 1 | 2 | 50 | 3,9 |
| K90Ro 150/12 (50 SZT.) | E11KM-01041104600 | 18,0 | 20,0 | M12 | 4,46 | | | | | | | | | | | | | | | | | | | | | | |
| K90Ro 150/14 (50 SZT.) | E11KM-01041104700 | 16,0 | 22,0 | M14 | 4,36 | | | | | | | | | | | | | | | | | | | | | | |
| K90Ro 150/16 (50 SZT.) | E11KM-01041104800 | 22,0 | 24,0 | M16 | 4,6 | | | | | | | | | | | | | | | | | | | | | | |
| K90Ro 150/20 (50 SZT.) | E11KM-01041104900 | 20,0 | 24,0 | M20 | 4,63 | | | | | | | | | | | | | | | | | | | | | | |
| K90Ro 185/10 (50 SZT.) | E11KM-01041104950 | 185 | 19,0 | 24,0 | 32 | | | 14,0 | 35,0 | | 46,0 | 53,0 | M10 | √ | 23 | | 2 | 4 | | | 50 | | | | | | 5,14 |
| K90Ro 185/12 (50 SZT.) | E11KM-01041105000 | | | | | 22,0 | 35,0 | M12 | 6,3 | | | | | | | | | | | | | | | | | | |
| K90Ro 185/14 (50 SZT.) | E11KM-01041105100 | | | | | 16,0 | 38,0 | M14 | 6,2 | | | | | | | | | | | | | | | | | | |
| K90Ro 185/16 (50 SZT.) | E11KM-01041105200 | | | | | 20,0 | 43,0 | M16 | 6,15 | | | | | | | | | | | | | | | | | | |
| K90Ro 185/20 (50 SZT.) | E11KM-01041105300 | | | | | 20,0 | 43,0 | M20 | 6,15 | | | | | | | | | | | | | | | | | | |
| K90Ro 240/12 (50 SZT.) | E11KM-01041105400 | | | | | 240 | 21,0 | 26,0 | 38 | 14,0 | | | 53,0 | | | 53,0 | | | 61,0 | M12 | | √ | 25 | 2 | 4 | 50 | 6,3 |
| K90Ro 240/14 (50 SZT.) | E11KM-01041105500 | 22,0 | 61,0 | M14 | 7,76 | | | | | | | | | | | | | | | | | | | | | | |
| K90Ro 240/16 (50 SZT.) | E11KM-01041105600 | 16,0 | 61,0 | M16 | 7,8 | | | | | | | | | | | | | | | | | | | | | | |
| K90Ro 240/20 (50 SZT.) | E11KM-01041105700 | 20,0 | 61,0 | M20 | 7,7 | | | | | | | | | | | | | | | | | | | | | | |
| K90Ro 300/12 (10 SZT.) | E11KM-01041105800 | 300 | 24,0 | 30,0 | 45 | | | | | 14,0 | 61,0 | 61,0 | 61,0 | M12 | - | | 28 | 2 | | - | 10 | | | | | | 2,8 |
| K90Ro 300/16 (10 SZT.) | E11KM-01041105900 | | | | | | | | | 16,0 | 24,0 | | | M16 | | | | | | | | | | | | | 2,28 |
| K90Ro 300/20 (10 SZT.) | E11KM-01041106000 | | | | | 20,0 | 24,0 | M20 | 2,28 | | | | | | | | | | | | | | | | | | |

Lz/s - Liczba zaciśnień - szerokie, Lz/w - Liczba zaciśnień - wąskie